

## WGV Care

Hi Customer

Thank you for choosing WGV security products. We have always put our customers first and foremost.

There are 4 things you should know before using this product

### 1. Micro SD card

If you don't have a Micro-SD card available at home now and don't want to spend extra time choosing one, please contact us directly.

TIP: the Micro-SD card gotta be formatted after inserting it up

### 2. Select 2.4G WIFI

The product only supports 2.4G wifi, please select 2. 4G wifi when setting up the app.

### 3. Select installation location

Please use your mobile phone to test the coverage of the home wifi signal at the planned installation position before installation, so that the product can receive a better signal.

### 4. Download the latest instruction

We keep improving the app , if the app interface is not accordance with the instructions . Please go to WGV website <https://wgvtech.com/manual> download the latest instructions

Get all the help of using product including but no limit to set up the app,please visit <https://wgvtech.com/> to get all of your problems solved by one-on-one live chat and service tech support



<https://wgvtech.com/>



[support@wgvtech.com](mailto:support@wgvtech.com)

# TABLE OF CONTENTS

<b>01</b>	What's Included	01
-----------	-----------------	----

<b>02</b>	Product Overview	02
-----------	------------------	----

<b>03</b>	WGV App Installation and Setup	03
-----------	--------------------------------	----

<b>04</b>	Mounting the Camera	04
-----------	---------------------	----

<b>05</b>	Register an Account	04
-----------	---------------------	----

<b>06</b>	Setup WiFi for the Camera	05-09
-----------	---------------------------	-------

<b>07</b>	Safety Statement	10
-----------	------------------	----

## What's Included



Camera



Screw Packs



Power Adapter



Mounting Bracket

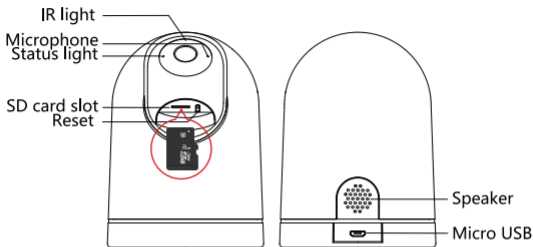


USB Cable



Quick Guide

## Product Overview



**CAUTION:** Please insert the Micro SD Card according to the direction shown in the diagram. Micro SD Card might JAM if inserted incorrectly and device could be damaged.

**SD Card Slot:** Support micro SD card for local storage (Max 128GB).

**Reset Button:** Used to restore the camera to factory settings  
(Press and hold for 5-8s).

### Status Light:

Blinking Red Light	Wait for network connection (slow) Connecting the network (fast)
Solid Blue Light	Camera is working correctly
Solid Red Light	Camera is malfunctional

## WGV App Installation and Setup

Search for "WGV" on Apple Store or Google Play Store to Install the App.



**WGV**

Or please scan below QR code below to download the "WGV" App to your Android or Apple device.



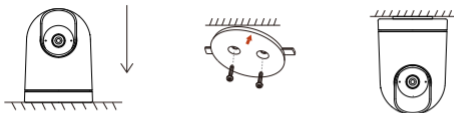
Download on the  
**App Store**



GET IT ON  
**Google Play**

## Mounting the Camera

1. Put the camera on a flat surface.
2. Use the included mounting bracket to attach the camera to a flat surface.



### What is required

Power Drill  
(not provided)



15/64" 6(mm)  
Drill Bit



## Register an Account

The WGV app is required to operate the camera.

Signing up for storage in the cloud is optional and not necessary when using an onboard Micro SD card.

1. Open the App to register an account. Go to the login interface and click "Sign Up"
2. Sign up with your email address, and click "Next".
3. Set up a "Nickname" and "Password" for your App, click "Done" to complete.

# Warranty

Please send your Amazon Order # to  
**support@wgvtech.com**  
to extend 3 Year Unlimited Replacement Service



<https://wgvtech.com/>



[support@wgvtech.com](mailto:support@wgvtech.com)

## Set up Wifi for the Camera

1. Bring both your mobile phone and your WGV camera close to your router ( max distance of 5 meters / 16 feet )

Note : The WGV camera can **only** connect to a 2.4 GHZ Wifi signal . It does not support using a 5 GHZ signal . Please connect to a 2.4G signal on your network as shown in the below illustration

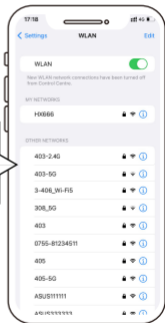


Choose this

✓ 403-2.4G

✗ 403-5G

Not support



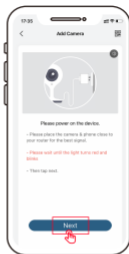
2. Log in to "WGV", then tap the "Add Device" icon in the center. Tap "Power Plug Camera" to add device .



2-1

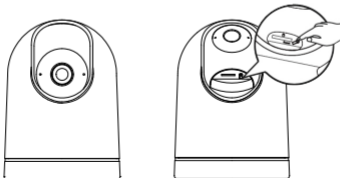


2-2



2-3

3. Reset the device and wait for a flashing RED indicator light , then tap "Next"



4. Selecting the Wi-fi the Camera needs to connected to. Type in the password and click "Next"



4-1



4-2

5. Use the WGV camera to scan the QR code on your mobile phone as noted below When the scan is complete you will hear a tone then click "Next"



5-1



5-2

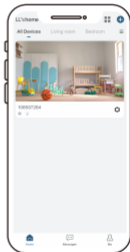
6. When connecting , you should make sure that the router , mobile phone and the WGV camera and are as close together as possible ( max 5 meters / 16 feet )  
When a successful connection occurs a "click" will be heard and a check mark will be shown like in the image below. The WGV camera will show with a numerical name that can be changed to your liking such as Baby Camera, Pet Camera, or any other name.



6-1



6-2



6-3

## Safety Statement

### FCC Statement

This device complies with Part 15 of the FCC Rules . Operation is subject to the following two conditions : ( 1 ) this device may not cause harmful interference , and ( 2 ) this device must accept any interference received , including interference that may cause undesired .

**Warning :** Changes or modifications not expressly approved by the party responsible for compliance could void the users authority to operate the equipment

**Note :** This equipment has been tested and found to comply with the limits for a Class B digital device , pursuant to Part 15 of the FCC Rules . These limits are designed to provide reasonable protection against harmful interference in a residential installation .

This equipment generates uses and can radiate radio frequency energy and , if not installed and used in accordance with the instructions , may cause harmful interference to radio communications . However , there is no guarantee that interference will not occur in a particular installation . If this equipment does cause harmful interference to radio or television reception , which can be determined by turning the equipment off and on , the user is encouraged to try to correct the interference by one or more of the following measures : ( 1 ) Reorient or relocate the receiving antenna ( 2 ) Increase the separation between the equipment and receiver . ( 3 ) Connect the equipment into an outlet on a circuit different from that to which the receiver is connected . ( 4 ) Consult the dealer or an experienced radio / TV technician for help

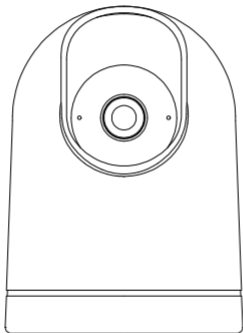
### FCC Radio Frequency Exposure Statement

The device has been evaluated to meet general RF exposure requirements . The device can be used in fixed / mobile exposure condition . The min separation distance is 20cm  
Notice : Shielded cables. All connections to other computing devices must be made using shielded cables to maintain compliance with FCC regulations .



## 2K WIRELESS SECURITY CAMERA

### Quick Guide



Register **3** year Warranty by sending Amazon Order Id  
to  [support@wgvtech.com](mailto:support@wgvtech.com)